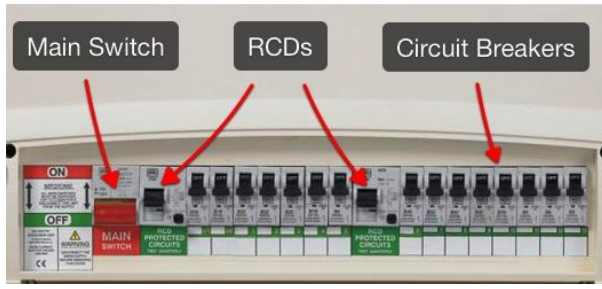


Instruction for OGL LED globe replacement P/N: CD16-W09-W, CD16-N09-W

Mains power switch in house's fuse box to be disconnected (switch to OFF position) before LED replacement globe installation



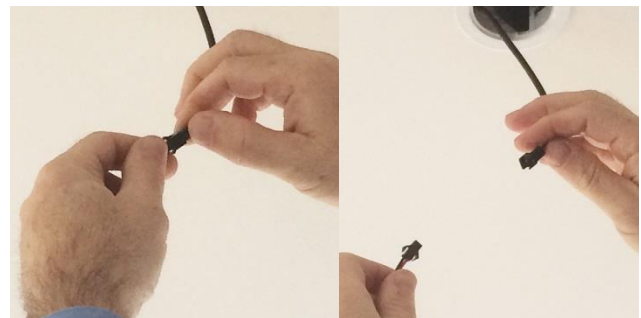
1. Unlock inner ring down light fitting by twisting anti-clockwise the ring



2. Pull down the ring with a globe until the black connector in the middle between LED globe and LED transformer will be visible



3. Push connector's locking tab down and pull opposite sides to dislodge both parts of connector to disconnect LED globe from the transformer



4. When globe is disconnected from LED transformer, remove globe from fittings ring by pushing sideways top of the globe and then sliding forward



5. Remove the old globe from the fitting ring

6. Disconnect LED wire from the old LED globe by **Pulling the cable gently when twisting the cable left/right**

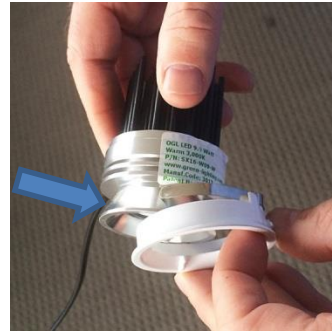


Pull/Push right

Pull/Push left

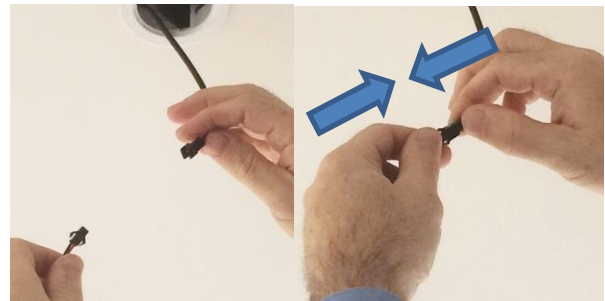
7. The small white connector push into new LED connector –make sure that connector small notch is on the bottom and clicks when is pushed –in.

8. Insert the new globe into the fitting's ring



9. Connect globe to LED transformer

Join two connectors together as shown below



10. Install globe by pushing into the fitting and twisting inner ring clock-wise lock in a fitting.



11. That last step finishes installation process and mains power can be connected and LED luminaire switch ON and tested.